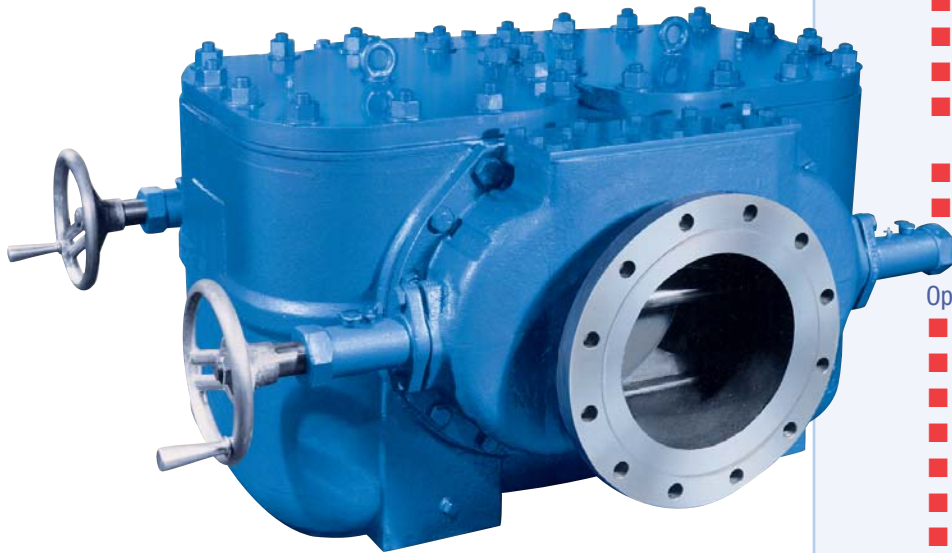


# MODEL 570

# MULTI-BASKET DUPLEX STRAINER

8" to 24" • Iron or Carbon Steel • Flanged

Sliding Gate  
Design



## Features

- Continuous flow – no shutdown for basket cleaning
- Sliding gate design
- Eight baskets per strainer (four per side)
- Bolted cover
- Compact
- Threaded drain
- Perforated or mesh stainless steel baskets standard
- Synchronized chain drive
- Pressure equalization assembly

## Options

- Bronze or stainless steel construction
- Basket perforations from 1/32" to 1/2"
- Basket mesh 20 to 400
- Monel baskets
- Vent valves
- Drain valves
- Cover lift davit
- Pressure differential gauge and switch connections
- Basket flange gaskets
- Magnetic basket inserts
- Left hand drive

The Eaton Model 570 Duplex Basket Strainer has been specifically designed to remove potential damage causing particles from large volumes of water and other process media (up to 30,000 gpm) efficiently and cost effectively. The strainer operates continuously and the pipeline flow never has to be shut down for strainer basket cleaning.

Flow is switched from one basket chamber to the other by a sliding gate mechanism operated by hand wheels. The free floating valve disc mechanism moves easily and does not bind. The valve operating stem is fully enclosed, protecting it from the fluid flow.

The Model 570 is a multi-basket strainer, providing four baskets in each of the two straining chambers for a total of eight per duplex strainer. This makes the Model 570 a very compact unit for its size with a low profile – ideal for tight installations where space is a problem. And even if space is not a problem, why use a strainer that takes up more valuable floor space than is necessary?

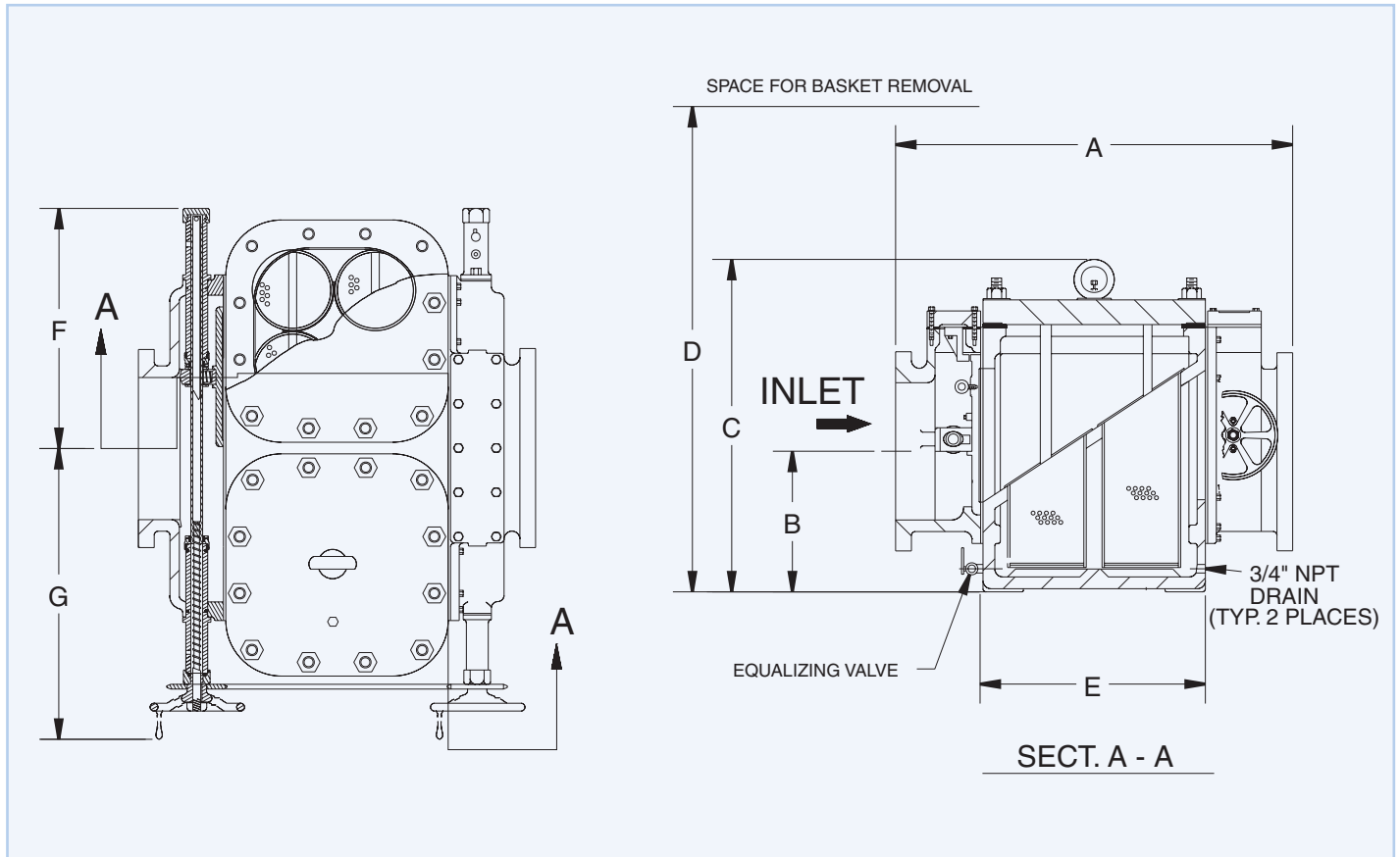
Because of the multi-basket design, the individual baskets are smaller and lighter than would be possible with just a single basket. And a single person can remove and clean the baskets easily

and rapidly. Lifting tackle is not needed to remove the baskets from the strainer housing. The baskets feature a unique, angled top to permit direct fluid entry that contributes to the strainer's low pressure drop. Because of the large open area ratio in the baskets, they have an unusually high dirt holding capacity – which results in a longer cycle between basket cleaning. Over time the savings in labor and downtime for basket cleaning will be considerable.

The Model 570 design has stood the test of time...over 60 years. They have long been used by the electric power industry and the primary metals industry for cleaning cooling water. They have long been the duplex strainers of choice in the paper, sewage, water treatment and chemical process industries for straining water and protecting equipment. In the petroleum industry, they are used to remove gums, tars, and dirt from oil and oil products.

All over the world, in dozens of different industries moving large volumes of liquid, you'll find the Eaton Model 570 protecting equipment or improving the quality of the process media.

## Technical Details



Dimensions and weights are for reference only. Contact us for certified drawings.

### Dimensions (inches / mm) Model 570 Multi-Basket Duplex Strainer

| Pipe Size | A            | B           | C            | D            | E           | F            | G            | Weight-Iron<br>lb / kg | Weight-Carbon Steel<br>lb / kg |
|-----------|--------------|-------------|--------------|--------------|-------------|--------------|--------------|------------------------|--------------------------------|
| 8 / 200   | 38.50 / 978  | 8.25 / 210  | 20.50 / 521  | 38.00 / 965  | 18.25 / 464 | 18.00 / 457  | 28.50 / 724  | 1410 / 641             | 1565 / 711                     |
| 10 / 250  | 40.50 / 1029 | 10/38 / 264 | 23.75 / 603  | 44.00 / 1118 | 20.50 / 521 | 20.25 / 514  | 30.5- / 775  | 1880 / 855             | 2087 / 949                     |
| 12 / 300  | 43.50 / 1105 | 13.50 / 343 | 29.25 / 743  | 52.00 / 1321 | 23.00 / 584 | 23.38 / 594  | 32.50 / 826  | 2604 / 1184            | 2890 / 1314                    |
| 14 / 350  | 46.25 / 1175 | 15.75 / 400 | 31.63 / 803  | 60.00 / 1524 | 24.88 / 632 | 25.56 / 649  | 35.00 / 889  | 3006 / 1366            | 3337 / 1517                    |
| 16 / 400  | 49.63 / 1261 | 17.81 / 458 | 35.00 / 889  | 66.00 / 1676 | 28.13 / 715 | 27.75 / 705  | 37.50 / 953  | 4350 / 1977            | 4826 / 2197                    |
| 20 / 500  | 64.00 / 1626 | 26.63 / 676 | 45.75 / 1162 | 88.00 / 2235 | 33.75 / 857 | 34.00 / 864  | 43.75 / 1111 | 10000 / 4545           | 11100 / 5045                   |
| 24 / 800  | 67.75 / 1721 | 29.50 / 749 | 53.00 / 1346 | 98.00 / 2489 | 36.63 / 930 | 40.38 / 1026 | 49.50 / 1257 | 11440 / 5200           | 12698 / 5772                   |

### Selection Chart

| Size      | Material     | End Connection | Gaskets      | Pressure Rating |
|-----------|--------------|----------------|--------------|-----------------|
| 8" to 24" | Iron         | Flanged 125#   | Non-Asbestos | 125 psi @ 100F  |
| 8" to 24" | Carbon Steel | Flanged 150#   |              | 175 psi @ 100F  |
| 8" to 16" |              | Flanged 300#   |              | 300 psi @ 100F  |

DIN flanges available

### C<sub>v</sub> Factors\*

| Size | Value | Size | Value |
|------|-------|------|-------|
| 8"   | 700   | 20"  | 3600  |
| 10"  | 1250  | 24"  | 5200  |
| 12"  | 1600  | 30"  | 8000  |
| 14"  | 2000  | 36"  | 11000 |
| 16"  | 2500  |      |       |

\* For water with clean, perforated basket